

How to use with iOS and Windows OS: NSRXRM3C2MSX Nolan Class 2 Bluetooth Wireless LiveMicrophone2

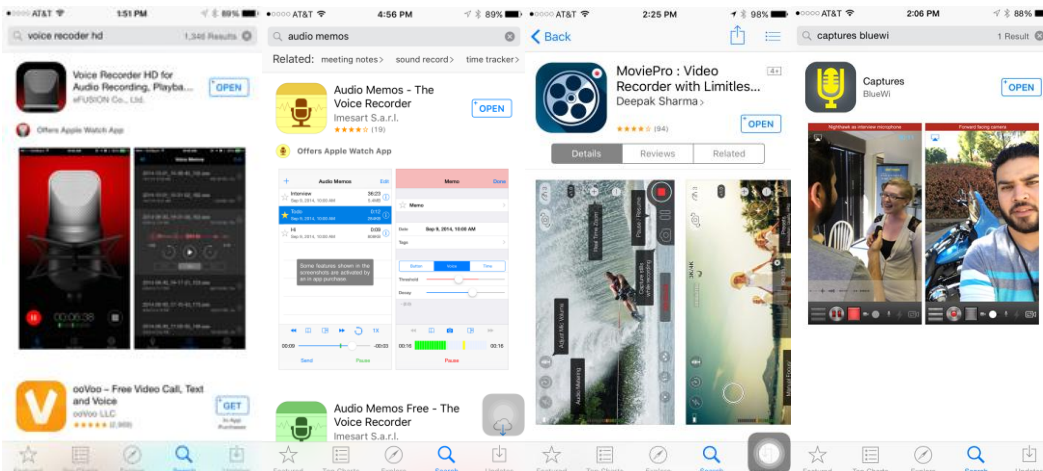
-----For iPad, iPhone, Android smartphone, Galaxy note.....

The Bluetooth LiveMIC2 (LiveMIC2) supports 2 different modes, type A is to work with audio receiver and Type B mode is to work with iPhone/iPad/Android smartphone/Galaxy Note...etc. You need to ensure using type B on the LiveMIC2 with iPhone/iPad/Android smartphone/Galaxy Note. Then, you can start to pair with iPhone/iPad/Android smartphone/Galaxy Note.

1. Slide the switch to type B mode. Then, turn on the unit and will see Blue and Amber LED blinking alternatively. This lighting is indicating the LiveMIC2 at type B pairing mode for iPhone/iPad/Android smartphone/Galaxy Note.
2. Then, turn on Bluetooth in your iPhone/iPad/Android smartphone/Galaxy Note to start pairing with LiveMIC2 and connect for both devices. The pair code is "0000".
3. The lighting of LiveMIC2 will change to blue light flashing slowing after pairing and connection

Also, one thing to remind that if you like to do the voice recording on iPhone/iPad/Android smartphone/Galaxy Note, you need to use the apps which support Bluetooth microphone. You can find related apps on App Store, Google play or search from internet to find out. As we know the apps with following

For voice recording apps: "Voice Recorder HD", "audio memos " or "Easy Voice Recorder Pro"
 For video capturing with Bluetooth voice recording: "MoviePro", "Captures"
 For "Captures", please type key words "Captures by BlueWi" in search at Apps store



-----For Mac, Macbook Air, laptop and PC



The Bluetooth LiveMIC2rophone (LiveMIC2) supports 2 different modes, type A is to work with audio receiver and type B mode is to work with Mac/Macbook Air/laptop/PC...etc. You need to ensure using type B mode on LiveMIC2 before starting to pair with laptop/Mac/Macbook Air/laptop/PC

On LiveMIC2 side - using Mac/Macbook Air/laptop/PC

1. Slide the switch to type B mode. Then, turn on the unit and will see Blue and Amber LED blinking alternatively. This lighting is indicating the LiveMIC2 at pairing mode for Mac/ laptop/pc
2. Then, turn on Bluetooth in your Mac/laptop to start pairing with LiveMIC2 and connect for both devices.

On Mac/Macbook Air/laptop/PC - ensure using headset/handFree profile

1. For using the Bluetooth microphone, you can use any Bluetooth driver as long as it supports headset/handfree profile since LiveMIC/LiveMIC2 will use standard Bluetooth headset/handfree profile.

If you are using Mac, then, the full set of Bluetooth profiles included headset/handfree profiles have built in the iOS systems. For Window OS, the Bluetooth driver will come with your Bluetooth hardware either with your PC or Bluetooth dongle normally. Your laptop/PC will install both profiles during your pairing stage automatically. If your driver does not have headset/handfree profile, please download or get it from your Bluetooth hardware supplier.

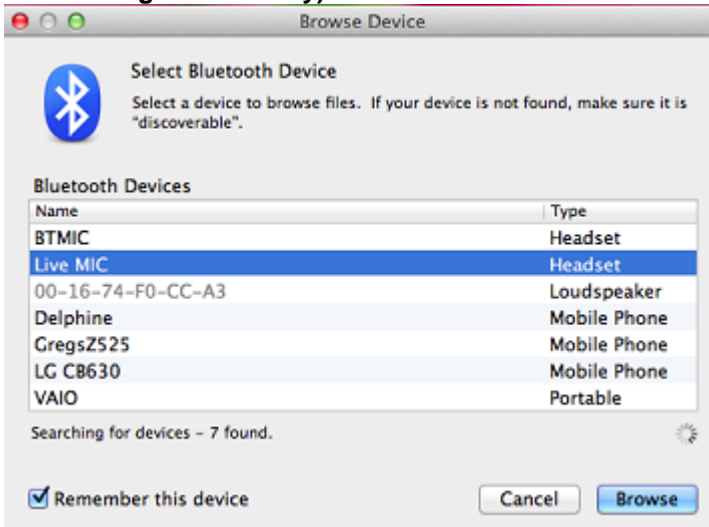
However, please keep your mind, the Bluetooth driver must support the headset/handfree profile which using by Bluetooth microphone.

2. Please select LiveMIC2 as headset/handfree device when it is show Bluetooth screen on your Mac/Macbook Air/laptop/PC during pairing and connection.
3. Select the LiveMIC2 as your default microphone or audio input from "Sound" at control panel management on your laptop/Mac/Macbook Air/laptop/PC after connection successfully.

-----Screen shoots for iOS, Win10 and Win7

----- LiveMIC with iOS

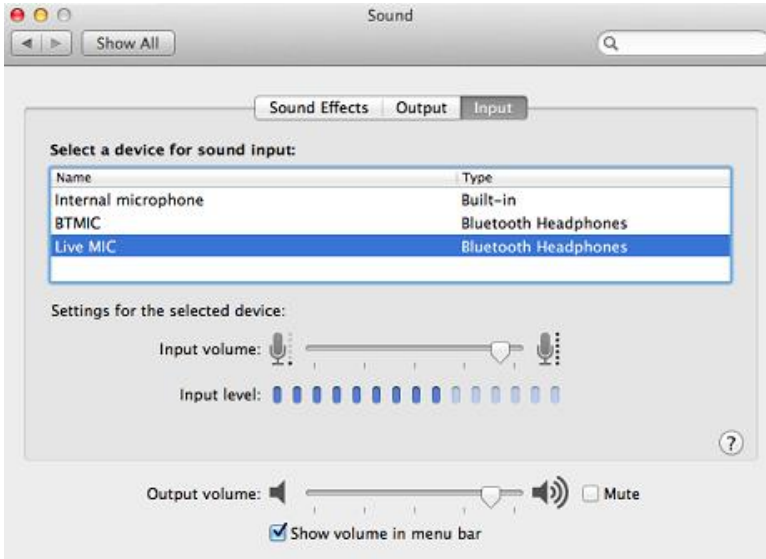
1. Click Bluetooth icon with Browse Device
2. Select LiveMIC (Please be sure LiveMIC is at pairing status with blue and amber light flashing alternatively)



3. Pair and connect LiveMIC (The blue light of LiveMIC become slow flashing after paired and connected)

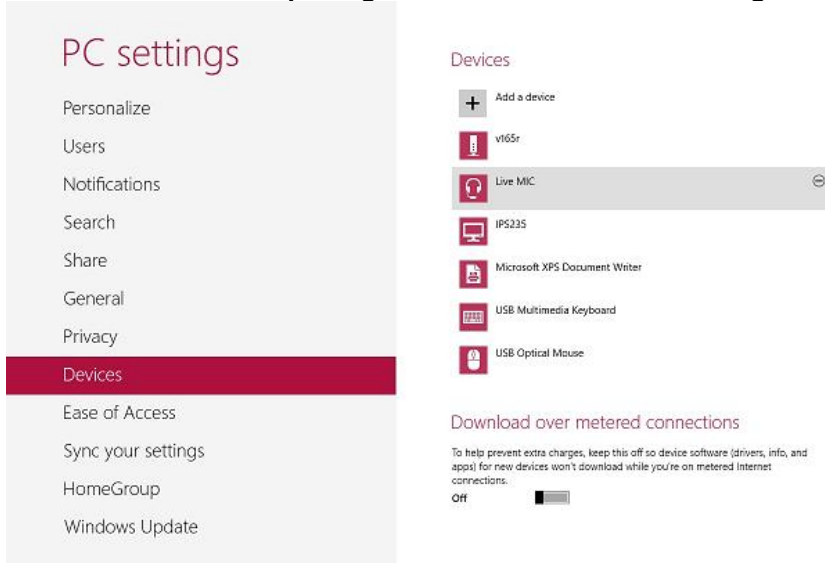


4. Go to Sound icon to choice LiveMIC as your default audio input device



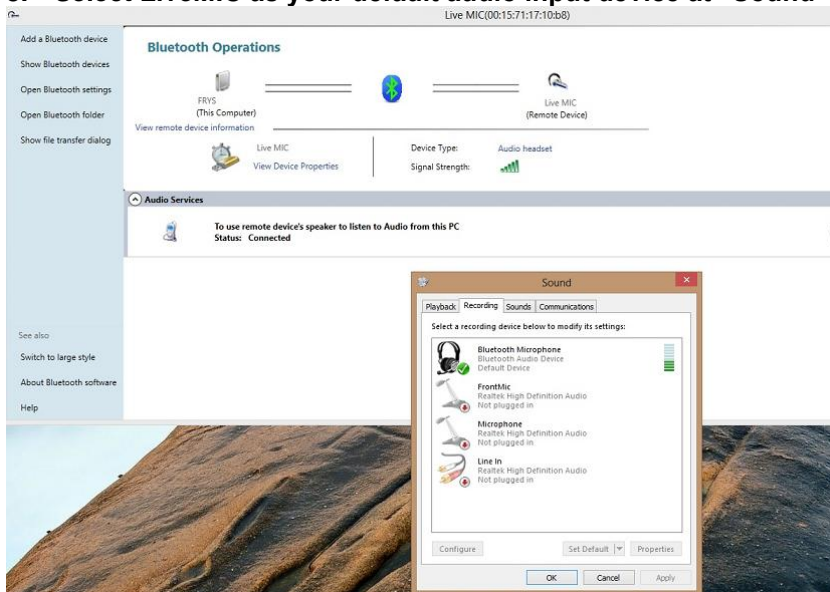
----- LiveMIC with Win10

1. Click Bluetooth icon with add new Device, select LiveMIC and pair/connect (Please be sure LiveMIC is at pairing status with blue and amber light flashing alternatively)



2. Pair with LiveMIC (The blue light of LiveMIC become slow flashing after paired and connected)

3. Select LiveMIC as your default audio input device at “Sound” under Control Panel

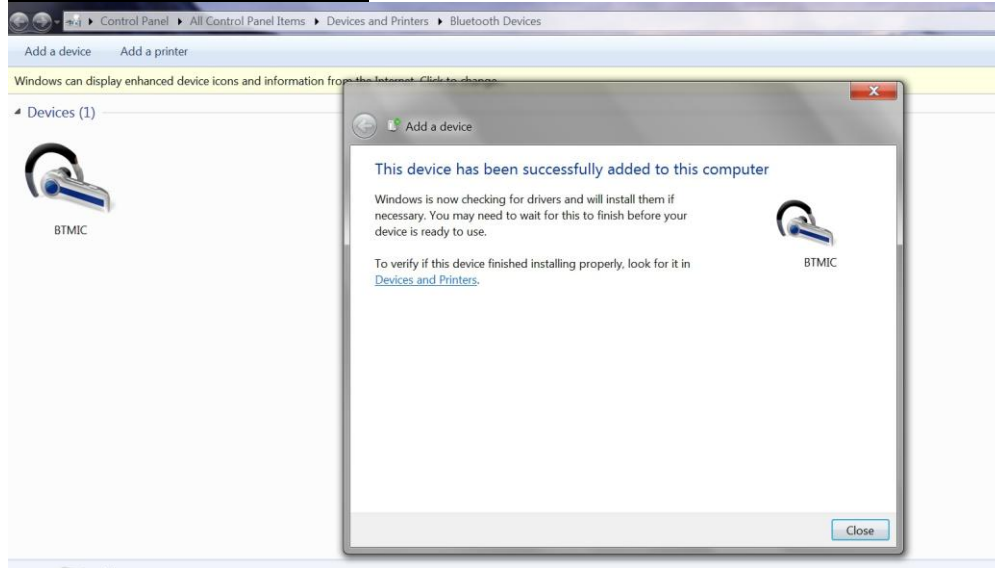


-----LiveMIC with Win7 and others with Broadcom’s Widcom and IVT Bluetooth driver

Please be sure the suitable Bluetooth driver has been installed with support Headset/handfree profiles.

1. Click Bluetooth icon with add new Device, select LiveMIC and pair/connect

***Broadcom's Widcom Driver**

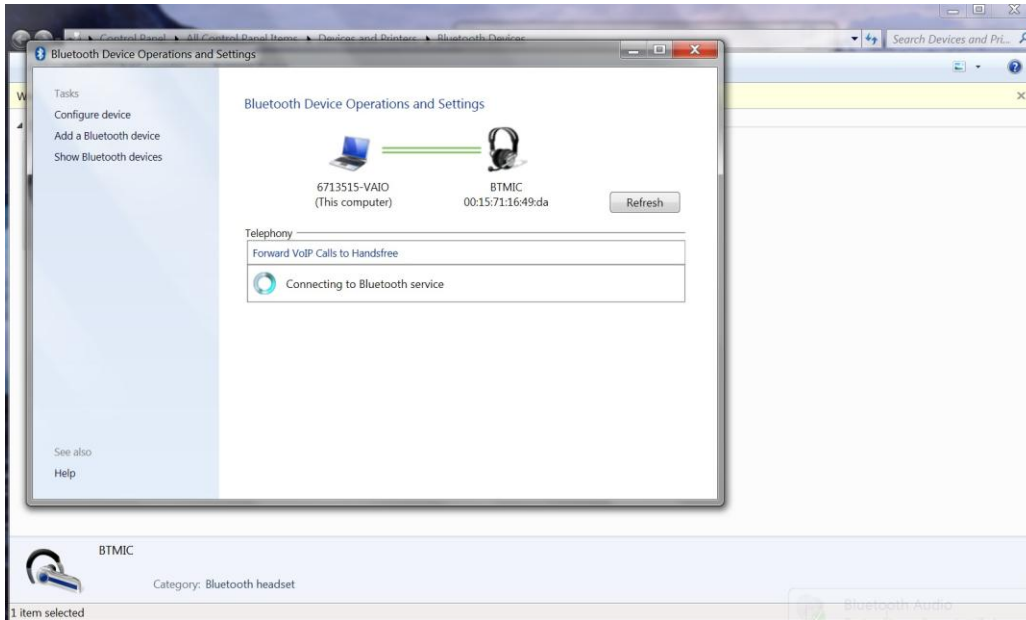


***IVT Bluetooth Driver**



2. Please type in pair code 0000, (The blue light of LiveMIC become slow flashing after paired and connected)

*** Broadcom's Widcom Driver**

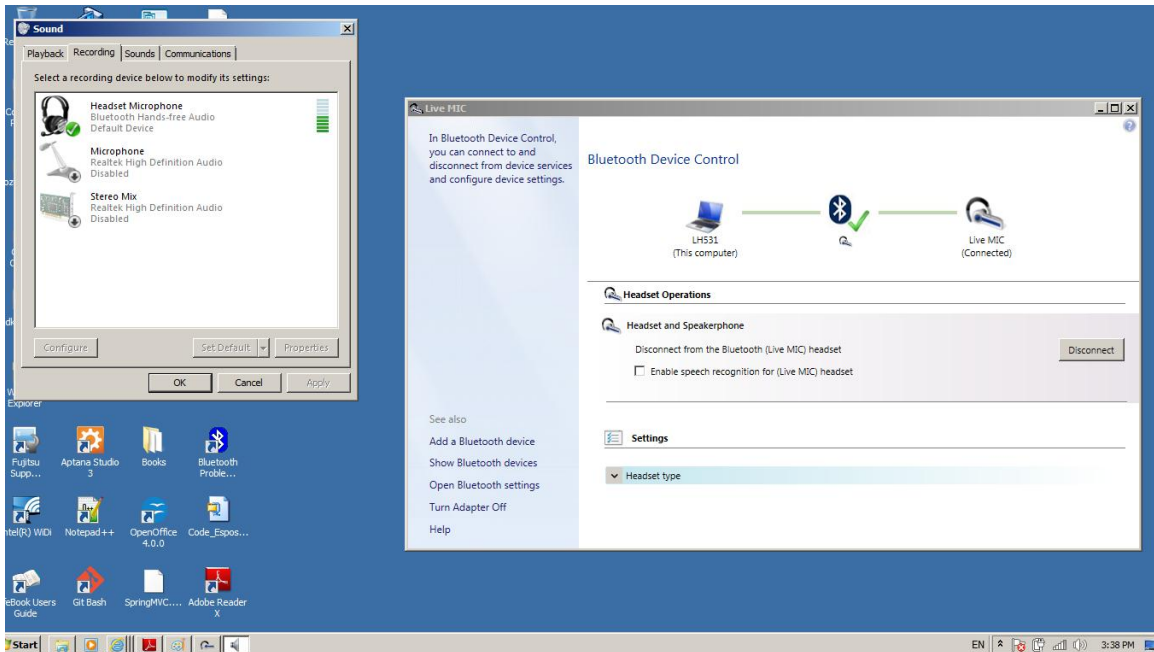
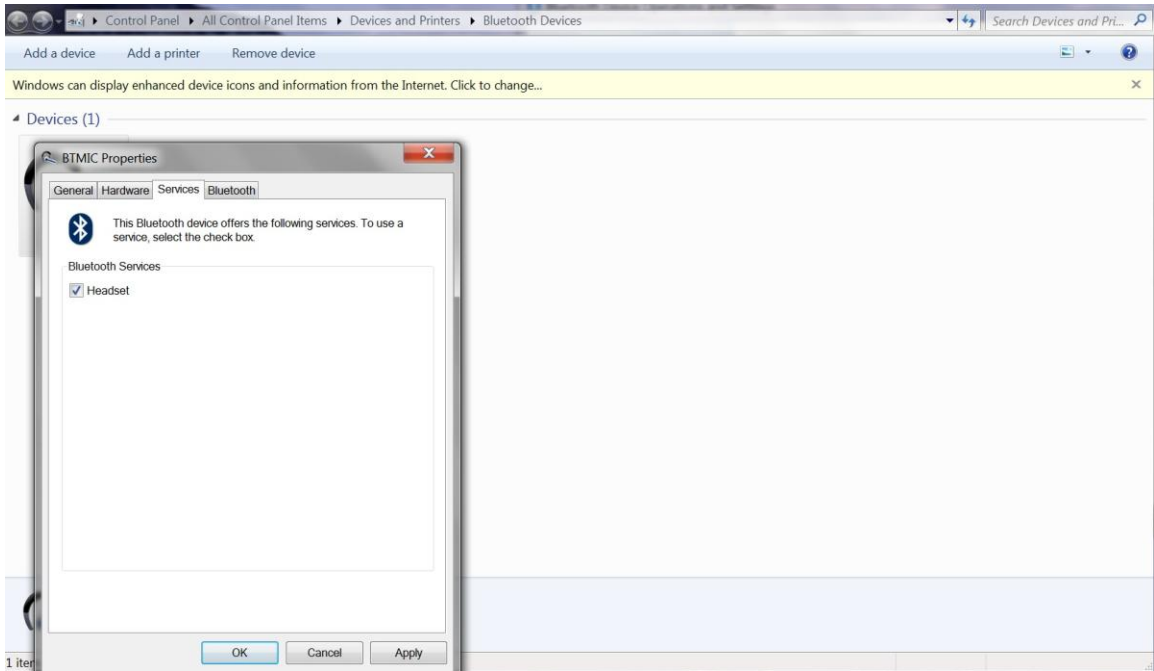


***IVT Bluetooth Driver**



3. Right click on LiveMIC icon and Select “Connect Bluetooth headset and microphone” to connect LiveMIC

***Broadcom's Widcom Driver**



***IVT Bluetooth Driver**

